

# Axcess™ Floor Care



Complete maintenance solution for carpet and hard floor

Easy access to small space cleaning



- **Carpet Vacuuming**

- » Deep cleaning two-motor vacuuming power
- » HEPA filtration for improved indoor air quality
- » Lightweight and easy to maneuver in tight spaces

- **Portable Detail Vacuuming**

- » The Axcess body is a lightweight, portable canister vacuum for productive above-the-floor vacuum dusting and detail cleaning
- » Simplifies stair and furniture cleaning

- **Hard Floor Maintenance and Vacuuming**

- » Maintains shine on VCT and natural stone floors
- » Small size and unique flexible head design makes cleaning and polishing in small, congested areas simple
- » HEPA filtration for improved indoor air quality
- » Light weight, compact design allows anyone to transport and use
- » Cleans, vacuums and shines hard floor to eliminate the inconvenience of daytime mopping

- **Natural Stone Maintenance**

- » Convenient tool to maintain natural shine on stone surfaces
- » Maintains shine on terrazzo and polished concrete



Carpet



Hard Floor



Above The Floor

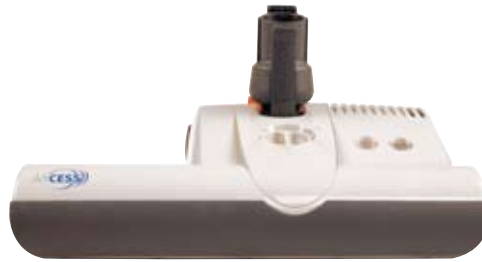
# Soft Floor

## Access™ to Carpet

Access 12 or 15 is a powerful two-motor upright vacuum. It provides the agility you need and the power you want in the lightest two-motor commercial upright available. It is equipped with a HEPA quality, three-step filtration system that results in 99.9% effectiveness to 0.3 microns, making it the perfect choice in dust sensitive areas. And at only 17 pounds, Access is up to five pounds lighter than comparable commercial uprights. Access provides the same legendary Windsor durability and world-class quality as our other models.



12-inch vacuum head for tighter congested areas.



15-inch vacuum head for larger carpeted areas.



# Hard Floor

## Access™ to Hard Floor

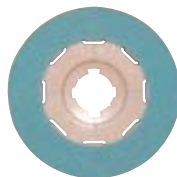
The Access Burnisher is the perfect machine to bring a shine back to small or hard-to-reach floor areas. This 12" burnisher maneuvers easily in and out of tight spots and with a weight of under twenty pounds, it's simple to get it to any cleaning location. Access Burnisher automatically adjusts to the floor for a consistent shine. And it even completely lifts the pad off the floor surface for protection if there is too much resistance. It has never been easier to make hard floor shine.



12-inch burnisher head for hard floor maintenance.



**Green floor pad:**  
Standard pad for daily maintenance on VCT and natural stone floor.



**Blue floor pad:**  
Maintenance on very high gloss and soft finishes.

Safety indicator lights

- Green = Operating Perfectly
- Red = Clog or Obstruction

Articulating neck

Large rubberized casters

Protective non-marking bumper

12" burnishing path



Simple, quick brush removal, no tools required.



Optional tool kit.



Access articulating head provides multi-directional movement for maximum carpet cleaning efficiency.



Machine automatically lifts the pad off the floor when it senses too much resistance.

# Stone & Terrazzo

## Access™ to Natural Stone and Terrazzo Maintenance

An additional application of the Access is provided through the selection of pads to maintain natural stone and terrazzo surfaces. Bring back the shine to your stone by treating it with the three-step restoration process.

Traces of Use

High Gloss



**STEP 1**  
**Red floor pad:**  
Treatment of scratches on the surface and preparation for the yellow floor pad.



**STEP 2**  
**Yellow floor pad:**  
Restoration of higher gloss and preparation for the green floor pad.



**STEP 3**  
**Green floor pad:**  
Creation of high gloss on the surface.

Cleaning Functions

## Above the Floor

### Access™ Above the Floor

With the power head removed, Access becomes a convenient portable vacuum. It is perfect for vacuum dusting and detail cleaning above the floor. Access also makes easy work of stairs and furniture.



Vacuum canister for above the floor cleaning.

Expandable detail hose

"Full bag" indicator

Flip-top access to internal filter bag

Patented HEPA filtration system; high efficiency to 0.3 microns

Ergonomic carrying handle

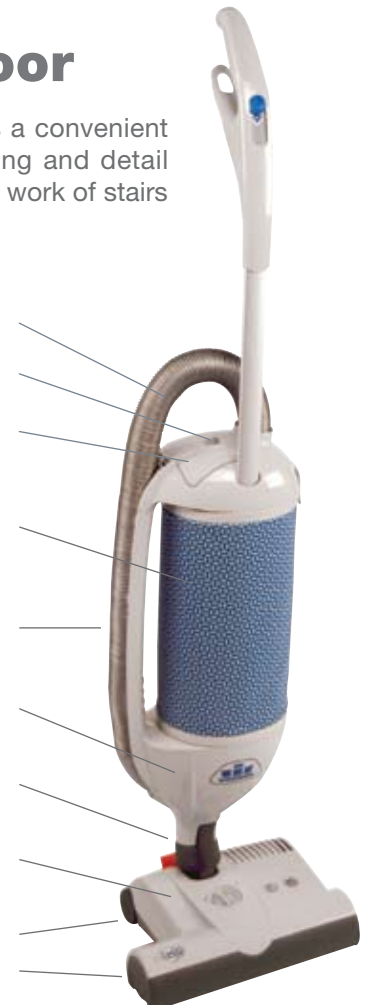
Powerful 1000 watt vacuum motor

Articulating neck

Powerful brush motor system; electronic clutch protects motor and belt

Rubberized wheels

No-tool brush removal



Indicator lights alert operator to shut down or blockage.



Non-marking bumper protects the machine and furniture.

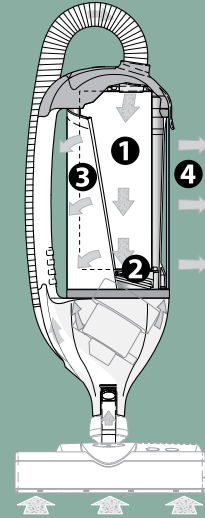


## Technical Specifications

Order No.:	Access 12" Floor Care Kit 12" Vacuum, Burnisher Head with 2 Green pads 12" Kit / 9.840-786.0	Access 15" Floor Care Kit 15" Vacuum, Burnisher Head with 2 Green pads 15" Kit / 9.840-787.0	Access Burnisher with Green Pad 1.012-063.0
Vacuum Motor:	High performance, single stage, 1.4 hp (1000 watts), 92" (234 cm) waterlift, 102 cfm (48 l/s) airflow		
Housing:	Injection molded, high impact ABS plastic		
Brush Drive:	Non-slip toothed belt, enclosed, electronic safety clutch and speed control		-
Brush Motor:	0.24 hp (175 watts)	0.27 hp (200 watts)	0.3 hp (200 watts)
Working Speed: Brush / Pad	5400 brush contacts per minute, 2700 rpm		2000 rpm
Dust Bag:	Triple layer bag with 3.5 l, enclosed, top-loading		
Sound Level:	69 dBA		
Wheels:	2" (5.2 cm) dia., rubberized		
Cable:	40' (12 m) 18/3 SJT		
Electrical:	120V, 60 Hz		
Working Width:	12" (31 cm)	15" (38 cm)	12" (31 cm)
Height:	48" (123 cm)		
Handle Weight:	2.6 lbs (1.2 kg)		
Weight:	17 lbs (7.7 kg)	17.4 lbs (7.9 kg)	19.7 lbs (8.9 kg)
Accessories:	12" Vacuum Only (1.012-061.0), 15" Vacuum Only (1.012-062.0), Access Polisher Head (8.632-399.0), Access 12 Power Head (8.632-400.0), 12" Brush (8.600-495.0), Access 15 Power Head (8.632-401.0), 15" Brush (8.613-849.0), Package of 10 Bags (8.628-479.0), Burnisher Pad-Blue; very fine abrasion (8.631-214.0), Diamond Pad-Green; fine abrasion (8.632-052.0), Diamond Pad Kit (2)-(1) Yellow Pad; abrasive, (1) Red Pad; very abrasive (8.632-053.0)		

Specifications are subject to change without notice.

### S-Class (HEPA-grade) Three-step Filtration System



1. First, the three-layer, full-size filter bag collects the vast majority of the debris.
2. The remaining large particles are collected by the motor protection filter.
3. Finally, the electrostatic exhaust filter thoroughly cleans the air that the vacuum emits.
4. The exhaust filter provides 99.9% HEPA quality filtration of particulates down to 0.3 microns.

### Target Markets:

- Health Care
- Hospitality
- Convenience Stores
- Retail
- Building Service Contractors
- Casinos
- Education

Windsor Innovations Protect:



Indoor Air Quality



Water



People



Environment